

# 29er EuroCup #3 2017

The Royal Danish Yacht Club, Rungsted, Denmark

13-14. May, 2017

## SAILING INSTRUCTIONS

Organizing authority: The Royal Danish Yacht Club and the combined 29er class associations of Europe.

### 1 RULES

- 1.1 The regatta will be governed by the rules as defined in *The Racing Rules of Sailing*, except as changed by these sailing instructions.
- 1.2 The applying prescriptions of the Nordic Sailing Federation and the Danish Sailing Association national will apply. See attachment A
- 1.3 Furthermore, the following rules will apply: 29er EuroCup 2017 Notice of Series
- 1.4 Racing rule(s) will be changed as described in the sailing instructions.
- 1.5 If there is a conflict between languages the English text will take precedence.

### 2 NOTICES TO COMPETITORS

Notices to competitors will be posted on the official notice board located at the club house.

### 3 CHANGES TO SAILING INSTRUCTIONS

Any change to the sailing instructions will be posted 1,5 hours before the first start on the day it will take effect, except that any change to the schedule of races will be posted by 2000 on the day before it will take effect.

### 4 SIGNALS MADE ASHORE

- 4.1 Signals made ashore will be displayed at the flag pole east of the club house.
- 4.2 When flag AP is displayed ashore, '1 minute' is replaced with 'not less than 30 minutes' in the race signal AP. This changes RRS race signal.
- 4.3 If a red flag is displayed: No boats shall leave the harbour.
- 4.4 Competitors shall wear a personal flotation device at all times when afloat. Flag Y will not be displayed. This changes the Part 4 preamble.

### 5 SCHEDULE OF RACES

**5.1** Dates of racing:

<i>Date</i>	<i>First warning</i>
Saturday, May 13 <sup>th</sup>	1100
Sunday, May 14 <sup>th</sup>	1000

**5.2** Number of races:

<i>Date</i>	<i>Races per day</i>
Saturday	No max
Sunday	No max

**5.4** To alert boats that a race or sequence of races will begin soon, the orange starting line flag will be displayed with one sound at least five minutes before a warning signal is made.

**5.5** On the last day of the regatta no warning signal will be made after 1500 hr.

**6 CLASS FLAG**

Class flag will be 29er acronym

**7 RACING AREA**

Attachment B shows the location of racing area.

**8 THE COURSE**

**8.1** The diagram in Attachment C show the course, including the approximate angles between legs, the order in which marks are to be passed, and the side on which each mark is to be left. The course length will be approximately 30 minutes.

**8.2** No later than the warning signal, the race committee signal boat will display the approximate compass bearing of the first leg.

**9 MARKS**

**9.1** Marks 1, 2, 3S and 3P will be orange cylinders.

**9.2** New marks, as provided in instruction 12.1, will be yellow cylinders.

**9.3** The starting line marks will be a Race Committee boat on port side and the Principal Committee Signal boat on starboard side.

**9.4** The Finishing marks will be the Race Committee boat on starboard side and a buoy with a blue flag.

**10 THE START**

**10.1** Races will be started by using rule 26 with the warning signal made 5 minutes before the starting signal.

**10.2** To alert boats that a race or sequence of races will begin soon, an orange flag will be displayed with one sound for at least five minutes before a warning signal is displayed.

**10.3** The starting line will be between a staff displaying an orange flag on the Race Committee Signal Boat at the starboard end and a staff displaying an orange flag on the port end starting line boat.

**10.4** A boat starting later than 4 minutes after her starting signal will be scored Did Not Start without a hearing. This changes RRS A4 and A5.

## **11 CHANGE OF THE NEXT LEG OF THE COURSE**

**11.1** To change the next leg of the course, the race committee will lay a new mark (or move the finishing line) and remove the original mark as soon as possible. When in a subsequent change, a new mark is replaced, it will be replaced by an original mark.

**11.2** Flag C together with repetitive sounds is a sufficient signal when changing the position of the new mark. This changes RRS 33 (a).

**11.3** When changing the leeward leg, the Race Committee may move the original marks (3S/3P) instead of using new marks.

**11.4** If necessary, in order to improve the angle or distance between the gate marks (3S/3P), the Race Committee can adjust these marks without signalling a change of course.

**11.5** Except at a gate, boats shall pass between the race committee boat signalling the change of the next leg and the nearby mark, leaving the mark to port and the race committee boat to starboard. This change RRS 28.1.

## **12 THE FINISH**

**12.1** The finishing line will be between a staff displaying a blue flag on the finishing mark and a blue flag on the committee boat.

## **13 PENALTY SYSTEM**

RRS 44.1 and 44.2 are changed so that only one turn, including one tack and one gybe, is required.

## **14 TIME LIMITS AND TARGET TIMES**

**14.1** Time limits and target times are as follows:

<i>Time limit first boat</i>	<i>Target time</i>
60 minutes	30 minutes

Failure to meet the target time will not be grounds for redress. This changes rule 62.1(a).

**14.2** Boats failing to finish within 10 minutes after the first boat sails the course and finishes will be scored Did Not Finish without a hearing. This changes RRS 35, A4 and A5.

## **15 PROTESTS AND REQUESTS FOR REDRESS**

**15.1** Protest forms are available at the race office, located in the club house. Protests and requests for redress or reopening shall be delivered there within the appropriate time limit.

**15.2** The protest time limit is 60 minutes after the last boat has finished the last race of the day or the race committee signals no more racing today, whichever is later. The same protest time applies to all protests by the race committee and the jury and request for redress. This changes RRS 61.3 and 62.2.

- 15.3** Notices will be posted no later than 30 minutes after the protest time limit to inform competitors of hearings in which they are parties or named as witnesses. Hearings will be held in the protest room, located on the second floor of the clubhouse, beginning as soon as possible.
- 15.4** Notices of protests by the race committee or protest committee will be posted to inform boats under RRS 61.1(b).
- 15.5** Breaches of instructions 17, 21 and 22 will not be grounds for a protest by a boat. This changes rule 60.1(a). Penalties for these breaches may be less than disqualification if the protest committee so decides.
- 15.6** On the last scheduled day of racing a request for reopening a hearing shall be delivered
- (a) within the protest time limit if the requesting party was informed of the decision on the previous day;
  - (b) no later than 30 minutes after the requesting party was informed of the decision on that day.
- This changes RRS 66.
- 15.7** On the last scheduled day of racing a request for redress based on a protest committee decision shall be delivered no later than 30 minutes after the decision was posted. This changes RRS 62.2.

## **16 SCORING**

- 16.1** Four races are required to be completed to validate the regatta.
- 16.2**
- (a) When fewer than 3 races have been completed, a boat's series score will be the total of her race scores.
  - (b) When more than 2 races have been completed, a boat's series score will be the total of her race scores excluding her worst score.
- 16.3** To request correction of an alleged error in a posted race, a competitor shall complete a scoring enquiry form available at the race office.

## **17 SAFETY REGULATIONS**

- 17.1** A boat that retires from a race shall notify the race committee boat as soon as possible or when that is impossible, the Race Office immediately after arriving to the harbor.
- 17.2** Competitors are advised to wear a wetsuit at all times when sailing.
- 17.3** Emergency procedure: If the race committee displays flag V with repetitive sounds, a state of emergency exists and assistance may be required. All team leaders, coaches and support personnel shall listen at VHF channel 77 and wait for further instructions given by the race officer. As soon as the state of emergency ends, the race committee shall remove flag V and announce the end of the emergency by VHF.

## **18 REPLACEMENT OF EQUIPMENT**

Substitution of damaged or lost equipment will not be allowed unless authorized by the race committee. Requests for substitution shall be made to the committee at the first reasonable opportunity.

## **19 EQUIPMENT AND MEASUREMENT CHECKS**

A boat or equipment may be inspected at any time for compliance with the class rules and sailing instructions. On the water, a boat can be instructed by a race committee equipment inspector or measurer to proceed immediately to a designated area for inspection.

## **20 OFFICIAL BOATS**

Official boats will display KDY flag.

## **21 SUPPORT BOATS**

**21.1** Team leaders, coaches and other support personnel shall stay 50 meters outside areas where boats are racing from the time of the preparatory signal for the first class to start until all boats have finished or retired or the race committee signals a postponement, general recall or abandonment.

**21.2** Support boats shall be marked with country code.

## **22 TRASH DISPOSAL**

Trash shall be brought ashore, or may be placed aboard support or official boats.

## **23 RADIO COMMUNICATION**

Except in an emergency, a boat shall neither make radio transmissions while racing nor receive radio communications not available to all boats. This restriction also applies to mobile telephones.

## **24 PRIZES**

Prizes will be awarded as follows:

Top 3 overall

Top 3 female

Top 3 youth

Prize giving will take place soonest possible after the races on the last day.

## **25 DISCLAIMER OF LIABILITY**

Competitors participate in the regatta entirely at their own risk. See RRS 4, Decision to Race. The organizing authority will not accept any liability for material damage or personal injury or death sustained in conjunction with or prior to, during, or after the regatta.

## **26 INSURANCE**

Each participating boat shall be insured with valid third-party liability insurance with a minimum cover of 3.000.000 EURO per incident or the equivalent in the competitor's national currency.

Event manager: Claus Ladefoged and Ann-Marie Mohr, Royal Danish Yacht Club

Race officer: Peter S. Lübeck, Royal Danish Yacht Club

Protest committee: Bjørn Stephensen (Chairman), Jaegerspris Sailing Club; Louise Venoebo, Boennerup Strand; Keld Stentoft, Royal Danish Yacht Club

## **Attachment A**

### **Prescription of the Danish Sailing Association national to RRS 1.2:**

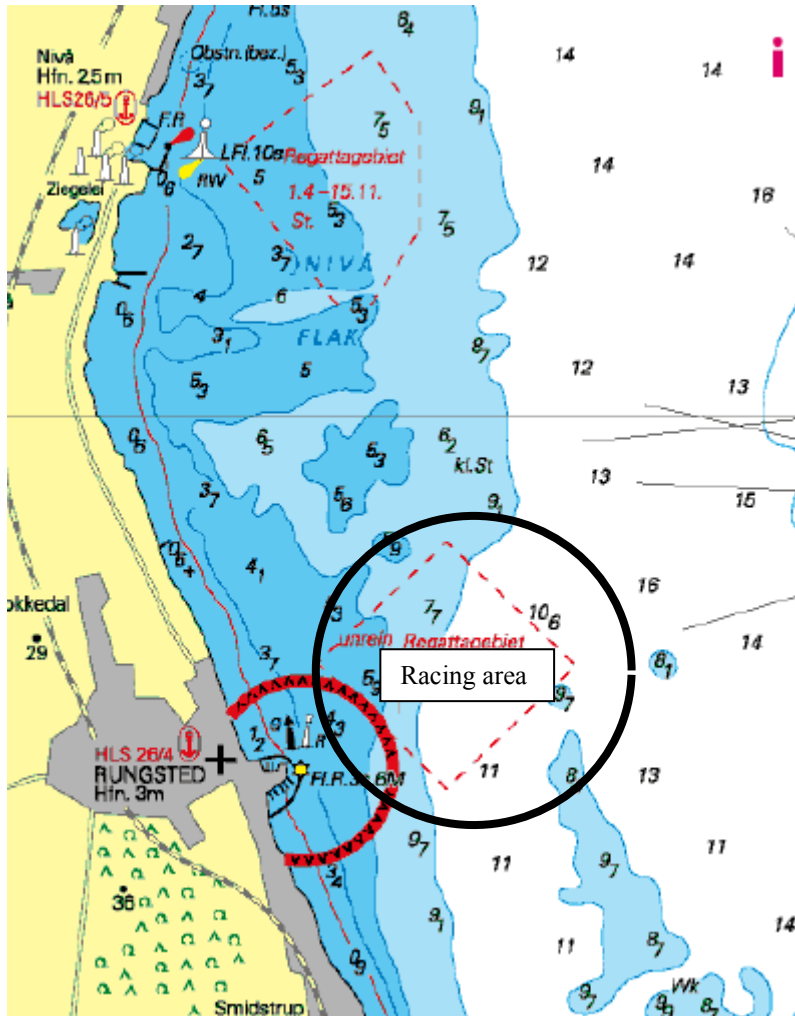
Danish legislation requires every boat to be equipped with personal buoyancy for the number of persons on board at any time.

### **Prescription of the Nordic Sailing Federation to RRS30:**

When RRS 30.2 or 30.3 apply, the base of the triangle mentioned in these rules shall be the starting line and the extension of the starting line to the starting vessel.

# Attachment B

## Course area



# Attachment C

Illustrating the course

## Windward-Leeward Course

Start – 1 – 2 – 3S/3P – 1 – 2 – 3P – Finish

